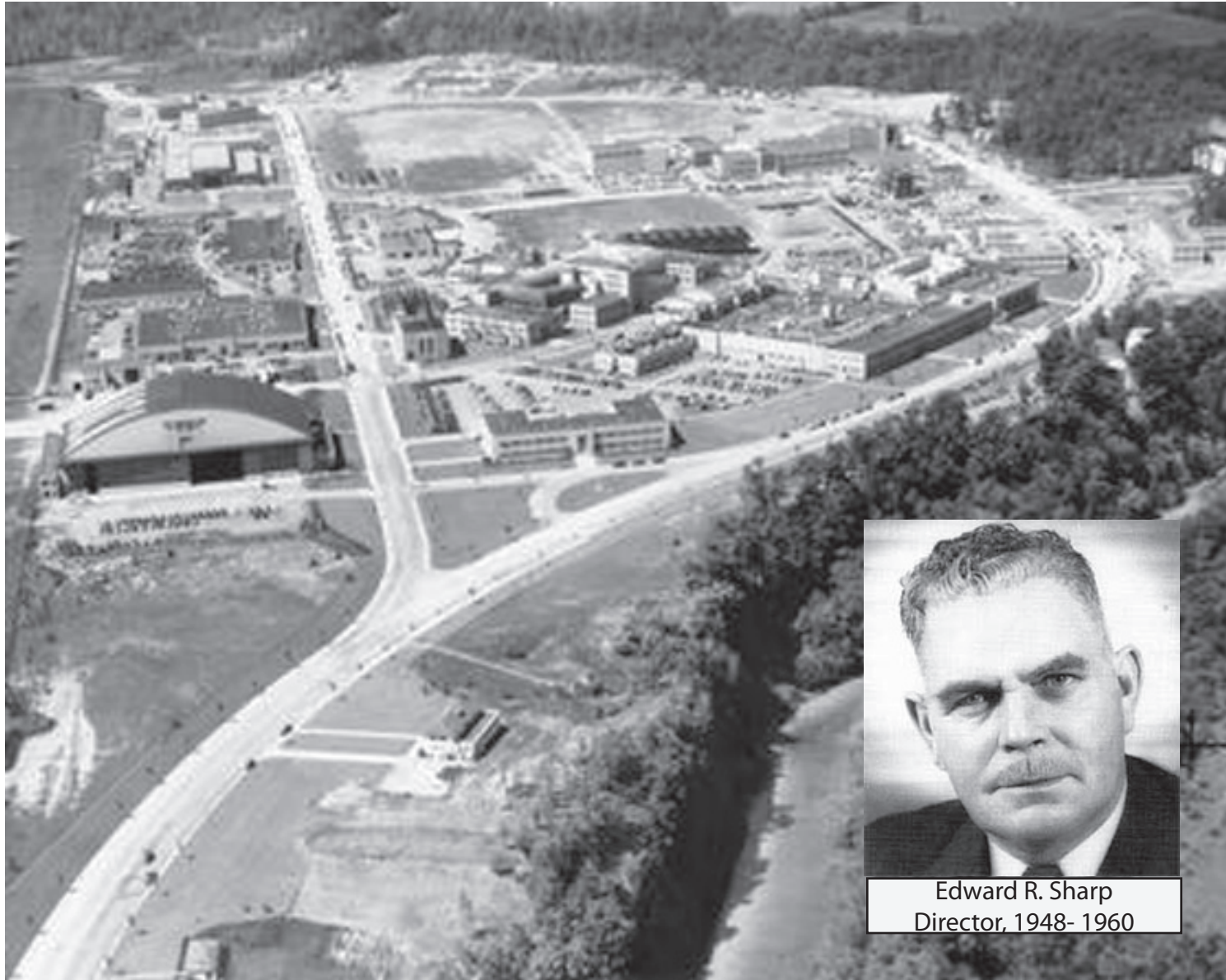


## ***LEWIS FLIGHT PROPULSION LABORATORY - Circa 1958***



Edward R. Sharp  
Director, 1948- 1960

## LEWIS ATTENDEES



*June Bahn-Szucs*



*Lorraine and Bill Briggs*



*Abe Silverstein and Edward Sharp (1951)*



*Joanne and Sam Calamia*



*Tony Colnar and Marilyn Keppler*



*Ed Sharp, Jimmie Doolittle, Unknown, John Victory  
At Lewis, 1958*

## LEWIS ATTENDEES



*Picnic Ground Pavilion  
Built by NACA Employees, 1947*



*Silvia and Jim Crouse*



*Jo and Elmer Davison*



*Lewis Softball Team, 1952*

*Standing L. to R.: Tischler, Scharer, Chelko, Azara, Budak, Bode, Kepke, Lamnek, Kaufman.*

*Seated L. to R.: Burke, Herman, Baxter, Cimperman, Sharp, Scull. Robards, Kovach*

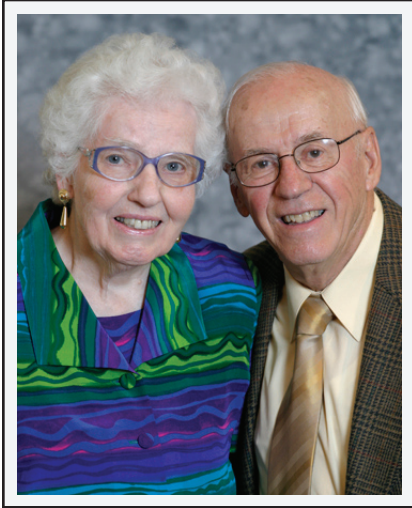


*Arlene and Harry Finger*



*Irene and Dick Geye*

## LEWIS ATTENDEES



*Helen and Bob Graham*



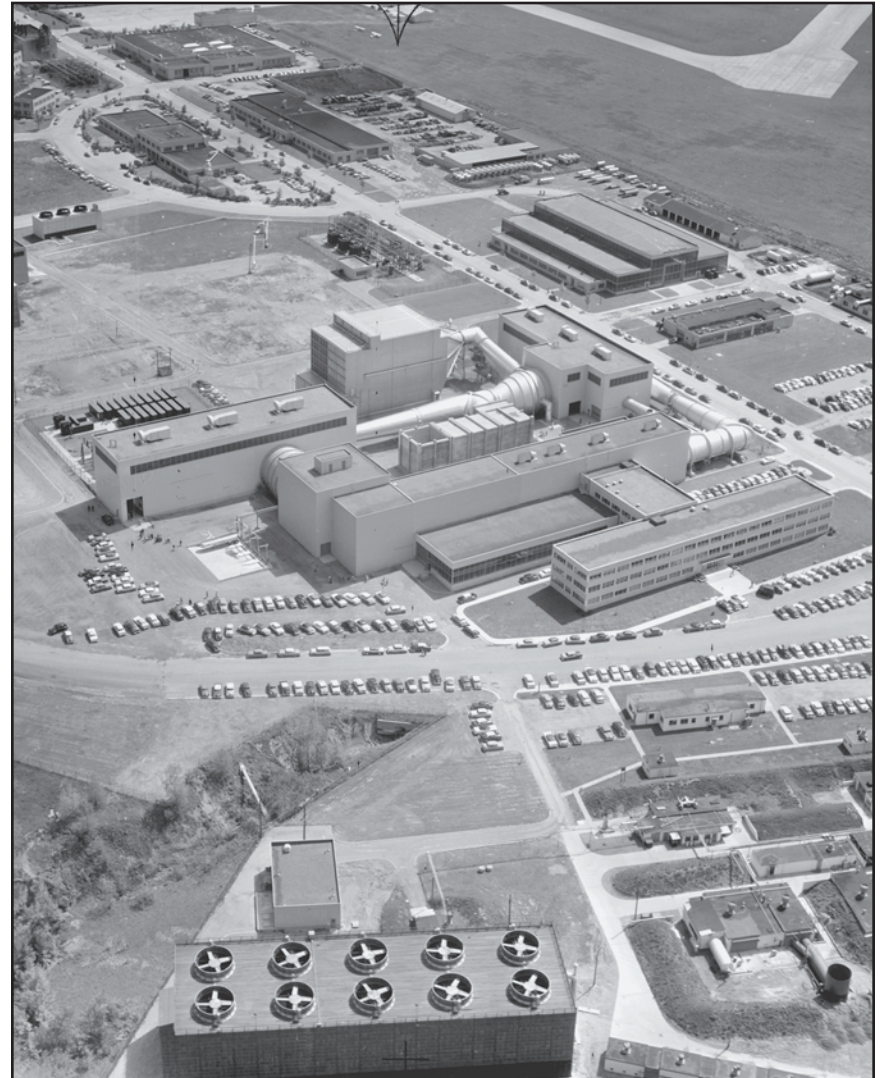
*Joanne Hartman and Norma Roberts*



*Helen and Bill Jones*



*Ellen Nachman*

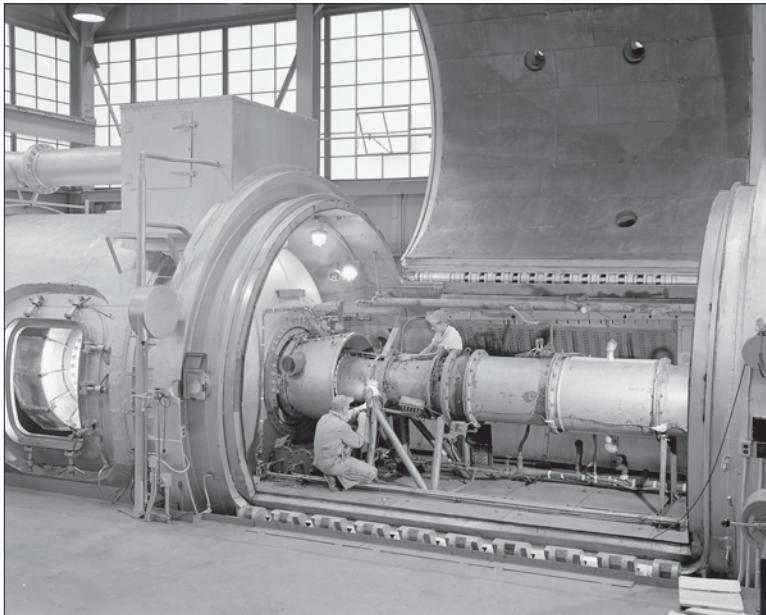


*10- by 10-ft Unitary Supersonic Wnd Tunnel (1956)*

## ***LEWIS ATTENDEES***



*Free Wheeling Discussion at Evening "Smoker" Session (1944)*



*Propulsion Systems Laboratory (1954)*



*Bill Nesbitt*



*Millie and Jack Norris*



*Mary and Warren North*

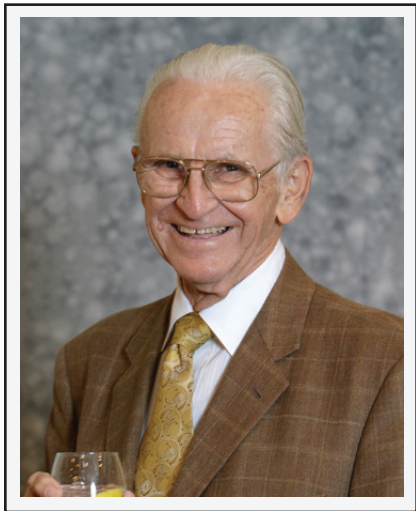


*Addie and Lou Revnyak*

## ***LEWIS ATTENDEES***



*Part of the Delegation*



*Ray Standahar*



*Sue and Jack Suddreth*



*Jan and Len Tower*

## LEWIS ATTENDEES



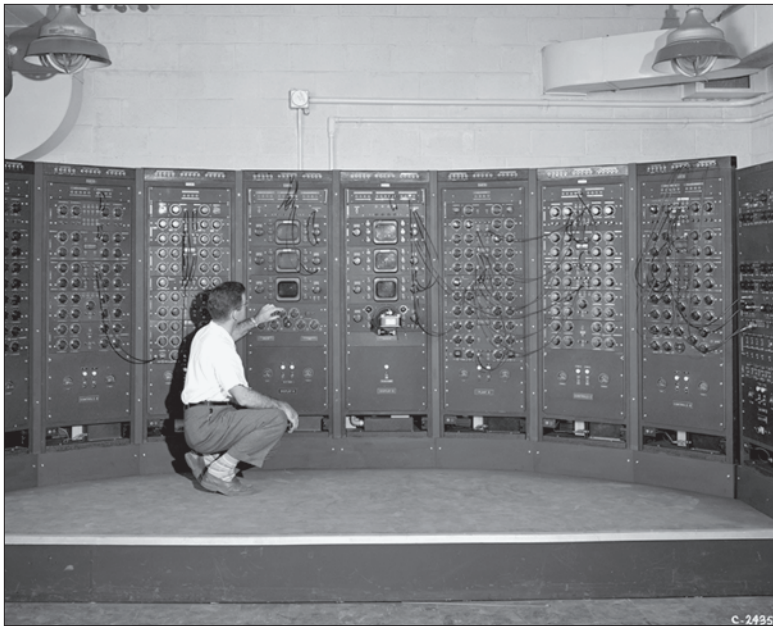
*General Dwight D. Eisenhower (1946)*



*Another Part of the Delegation*

## NO PHOTOGRAPHS TAKEN

- Merv and Pat Ault
- Bob and Judd Dietz
- Lou and Helene Haughney
- Jay and Mary Lou Moses
- Len and Dana Obery
- Frank and Marilyn Rom



*Analog Computing Machine in Fuel Systems Building (1949)*

## M2 - F2 LIFTING BODY ON RAMP AT DRYDEN



*The M2 - F2 was based on studies conducted at Ames. It weighs 4,620 pounds, was 22 feet long, and had a width of about 10 feet. The aircraft was severely damaged on its 16th gliding flight during the landing maneuver. The aircraft was rebuilt at Dryden and designated the M2 - F3. Subsequent flight tests answered many of the generic questions about this class of vehicle. The M2 - F3 now hangs in the Smithsonian Air and Space Museum along with the X-15 aircraft number 1.*