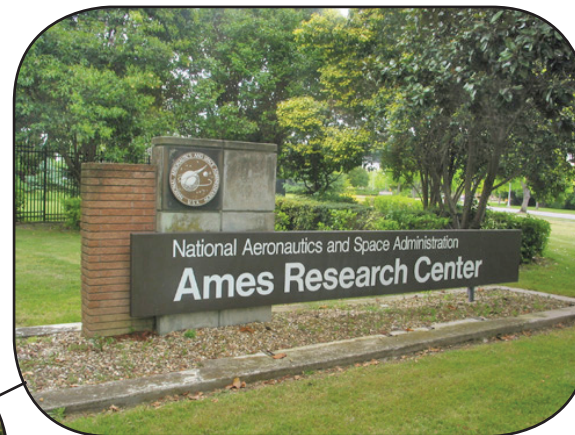


A WIDE SELECTION OF TOURS



Computer History Museum



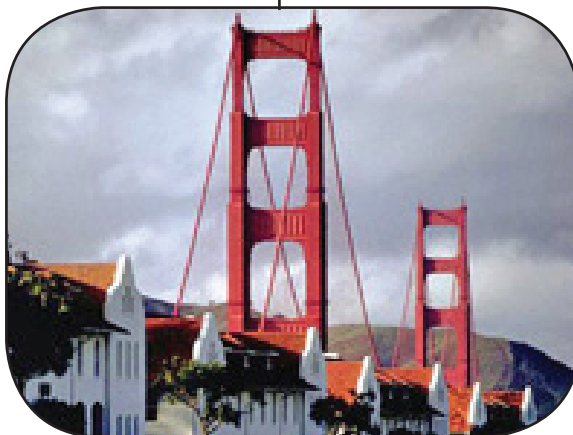
Ames Research Center



Royal Coach Transportation



Hiller Aviation Museum



San Francisco



Cooper-Garrod Estate Vineyards

AMES RESEARCH CENTER

Exploration Center

One of the three sites visited was the Exploration Center. The facility provides a place where visitors can experience NASA technology and missions first hand. Among the exhibits on display were a one-tenth scale interactive model of the Mars rovers, a Mercury capsule flown as the last unmanned test flight before Alan Shepard's flight aboard Friendship 7, a moon rock and many exhibits of past and current Ames research.



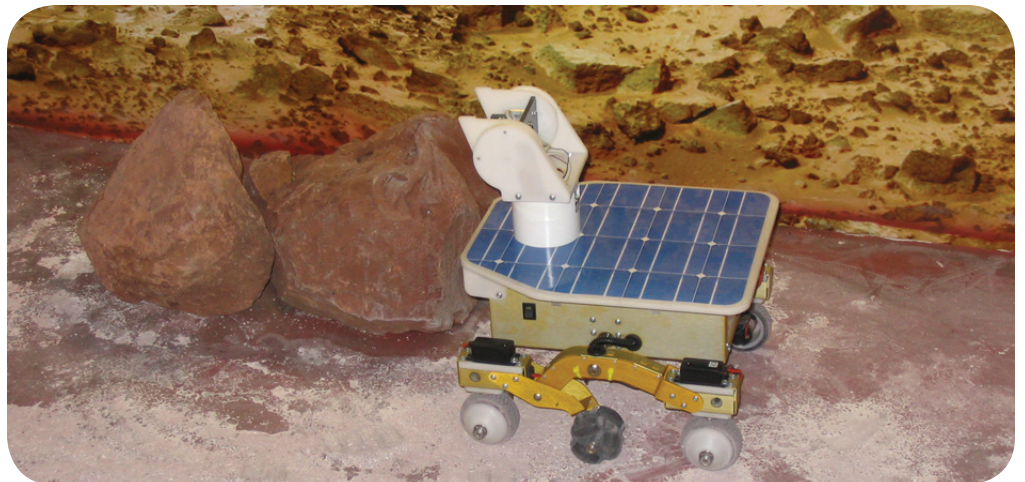
Exploration Facility



Group by Sophia Airborne Telescope Model



X-36 Wind-Tunnel Model



Interactive Mars Rover Model

AMES RESEARCH CENTER

NASA Advanced Supercomputing Facility

The NASA Advanced Supercomputing Facility (NAS) provides simulation capabilities for all of NASA and many other leading-edge US scientific endeavors. The NAS has several computers, the most advanced being Columbia which ranks among the world's most powerful. In the Fall of 2004 Columbia was rated at 51.9 teraflops. (One teraflop is 10^{12} calculations per second). Columbia was used extensively in the Space Shuttle return to flight effort following the Space Shuttle Columbia loss in flight on February 1, 2003. More recently, it has been used to predict paths and strengths of several recent hurricanes. Of course, it also is used routinely for aerodynamic simulations. The NAS facility has over 400 terabytes of online storage and many graphics devices used to display calculated results.



NAS Facility



The Lecture Was Short



Pondering the Results



Part of Supercomputer Columbia



Sample Internal Flow Calculations

AMES RESEARCH CENTER

Future Flight Central and other Facilities

"Future Flight Central" is the world's first full-scale virtual control tower. The facility provides a way to test potential solutions to air and ground traffic problems at commercial airports. Projection screens provide a seamless 360 degree high-resolution view of an airport from the perspective of the control tower. It can simulate the realistic movement of up to 200 aircraft and ground vehicles at any one time. Airlines and airport managers use the facility regularly.

Views of several other facilities are also shown on this page



Now, "This is What You'll See"



The Screens Wrap all the way Around



Chicago O'Hare is Being Simulated



80- by 120- foot Wind Tunnel



Automation Sciences Building



Administration Building



Another View of O'Hare



Some of Organizing Committee

COOPER-GARROD ESTATE VINEYARDS

NACA Ames retiree George Cooper and his extended family have 28 acres of vineyards on a 120-acre estate that has been in the family for over 100 years. They produce 6 kinds of wine, three of which have received many gold, silver and bronze awards. Their historic tasting room and store was originally built about 75 years ago to store dried prunes and apricots. Each of the about 150 attendees who took part in this tour received an inscribed wine glass identical to those used for the Banquet. Several persons purchased some of the wines to have sent home. The Garrod family also manages an excellent equestrian facility on the property with 200 head of horses and staff to manage them.



Arriving Bus Load



One of the Vineyards



Tasting Room and Store



A Happy Group on a Beautiful Day

COOPER-GARROD ESTATE VINEYARDS



Discussing the Vineyards



Soon to be Chardonnay



*We Hope Doris Cooper Isn't Saying
She Forgot the Formula*



Fermenting Tanks



*Barrel Room (Note dark hands - Bill Cooper has been Into the
Grapes)*

COOPER-GARROD ESTATE VINEYARDS



Tasting on the Patio



Proprietor George Cooper and Dick Kurkowski



Light Snacks With the Wine



Pouring is Jack Franklin - A Prized Committee Assignment



Don't Forget the Horses

SAN FRANCISCO TOUR

The all-day San Francisco tour started and ended at the hotel in sunny San Jose. On San Francisco, however, fog obscured some of the more distant views, particularly near the bay. Nevertheless, the group enjoyed visiting Golden Gate Park, the downtown area around City Hall, Union Square, the Presidio, the Embarcadero, and Twin Peaks. Of course, the tour did make the trip across the Golden Gate Bridge and stopped at a vista point on the edge of Sausalito. A two-hour lunch stop was made at Pier 39 next to Ferry terminals and Fisherman's Wharf.



Golden Gate Bridge



Pier 39 Entrance



San Francisco City Hall



Sea Lions at Pier 39

SAN FRANCISCO



Golden Gate Park Visitor's Center



Bay Bridge in Far Distance



Loading at Pier 39



Golden Gate Park Visitor's Center



Courtyard at Pier 39

HILLER AVIATION MUSEUM

The Hiller Aviation Museum was founded by Stanley Hiller, Jr. in 1998 and is located at the San Carlos airport, a few miles south of San Francisco. In addition to restoration shops, museum store and theaters, it has a 27,00 square foot main gallery for full scale aircraft and an 8,000 square foot atrium for display of small aircraft and scale models. Some of the exhibits include the 1869 Aviator, Curtis Jenny, XH-44 helicopter, Boeing Condor, 747 cockpit, Boeing SST mock-up, AD-1 sub-scale oblique-wing flight demonstrator, and an early spy plane. Many attendees on the tour could easily have spent more time than was available pouring over the exhibits and "reliving" the early days of aviation.



Many Craft Hanging From Ceiling



Listening to a Short Lecture



Hiller Aviation Museum



Group By Boeing SST Mock-up

HILLER AVIATION MUSEUM



Cockpit Mockup



Wright Brothers Wind Tunnel Model



Hovercraft Display



An Attentive Audience

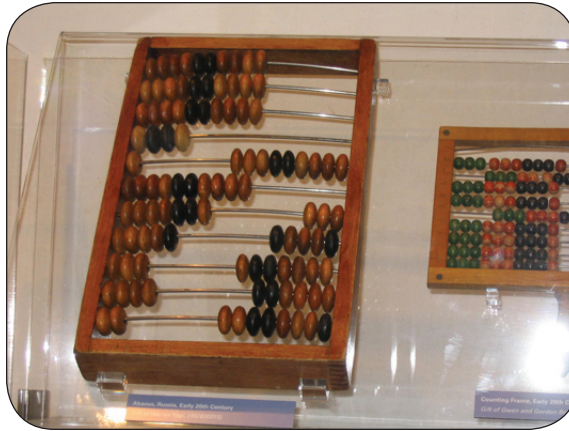


The Macon Was Stationed at Moffett

COMPUTER HISTORY MUSEUM

The Computer History Museum is the world's largest and most significant history museum for preserving and presenting the computing revolution and its impact on the human experience.

The museum's current collection contains more than 4,000 artifacts, 10,000 images, 4,000 linear feet of catalogued documentation, and gigabytes of historic software. Its initial west coast location was established in 2000 at Moffett Field where it remained until being moved to its current location in 2002. Two weeks after our Reunion the Bill and Melinda Gates Foundation pledged a \$15 million gift to the museum's fund-raising campaign, bringing the total of money raised to over \$73 million toward its \$125 million goal



Early 20th Century Abacus



An Attentive Group



Computer History Museum



Arrival Briefing In Museum

COMPUTER HISTORY MUSEUM



Control Data Corporation 6600



Detailed Explanation



Fun to Watch the Dials Spin



Part of ILLIAC IV Computer, Once at Ames

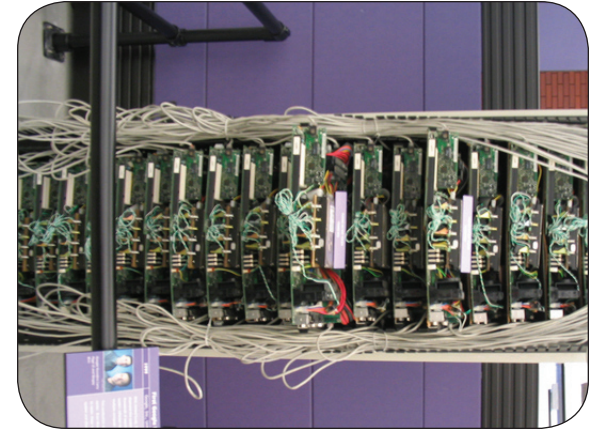
COMPUTER HISTORY MUSEUM



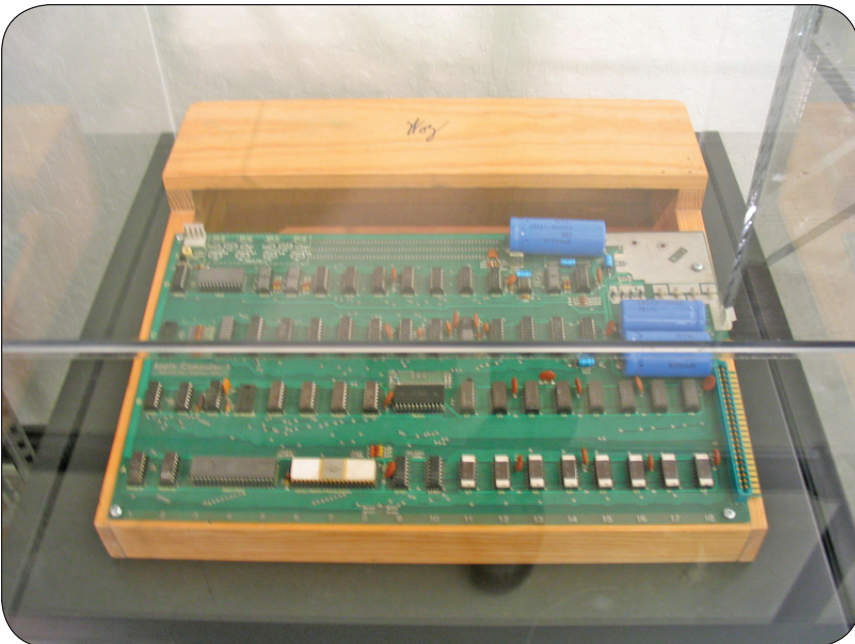
More Briefings



This Is a Good Tour



Early Google Server



Steve Wozniak's Early Personal Computer



There's Something on a Screen